



EMPIRE AVIATION GROUP

2012 Challenger 605

SERIAL NUMBER 5879 | REGISTRATION M-ARKZ



2012 CHALLENGER 605 | SERIAL NUMBER 5879 | REGISTRATION M-ARKZ



EMPIRE AVIATION GROUP

Airframe / Engines / APU

Airframe:

1,774.9 Hours Since New / 812 Landings Since New (as of October 12, 2018)
Enrolled on JSSI Airframe Maintenance Program

Engines:

Model: General Electric CF-34-3B
Left: 950997 / 1,774.9 Hours / 812 Cycles
Right: 950996 / 1,774.9 Hours / 812 Cycles
Enrolled on JSSI (JSSI Exhibit C Available Upon Request)

APU:

Honeywell GTCP36-150 (CL) / s/n: P-326 / 1,804 Hours / Enrolled on JSSI

Highlights

- One Owner Since New
- Operated Part 91 Since New
- Collins Cabin Management System V10 High Definition Upgrade
- Dual Channel Swift Broadband WiFi
- Engines, Airframe, and APU enrolled on JSSI
- 12 Passenger Configuration
- Fully Equipped Forward Galley



EMPIRE AVIATION GROUP

Avionics

- Collins Proline 21 Avionics Suite
- Four 10" x 12" Flight Displays – Electronic Flight Instrument System
- Dual Collins Flight Management System – FMS 6000
- Honeywell Autopilot with Autothrottle
- Dual Inertial Reference System
- Dual Collins GPS-4000 Global Positioning System
- Dual Collins Air Data Computer
- Dual Collins NAV-4000 Navigation Radio
- Dual Collins DME-4000 Distance Measuring Equipment
- Dual Collins VHF-4000 Very High Frequency Communication
- Dual Collins HF-9301A High Frequency Communications with SELCAL
- Collins RTA-854 Weather Radar
- Dual Collins ALT-4000 Radio Altimeter
- Dual ATC Mode S TDR-94D Transponders
- Honeywell Mark V Enhanced Ground Proximity Warning System with TAWS
- Dual Collins TCAS II with Change 7.1 Traffic Collision Avoidance System
- Artex 406 Emergency Locator Transmitter
- L3 FA2100 Cockpit Voice Recorder
- L3 FA2100 Flight Data Recorder
- Engine Indication & Crew Alerting System





EMPIRE AVIATION GROUP

Maintenance

<i>Inspection</i>	<i>Last Complied With</i>	<i>Next Due</i>
6 Month	15 November 2018	25 May 2019
12 Month	22 May 2018	25 May 2019
24 Month	22 May 2018	26 May 2020
36 Month	22 May 2018	29 May 2021
48 Month	10 July 2016	25 May 2020
96 Month	Not Applicable	25 May 2020



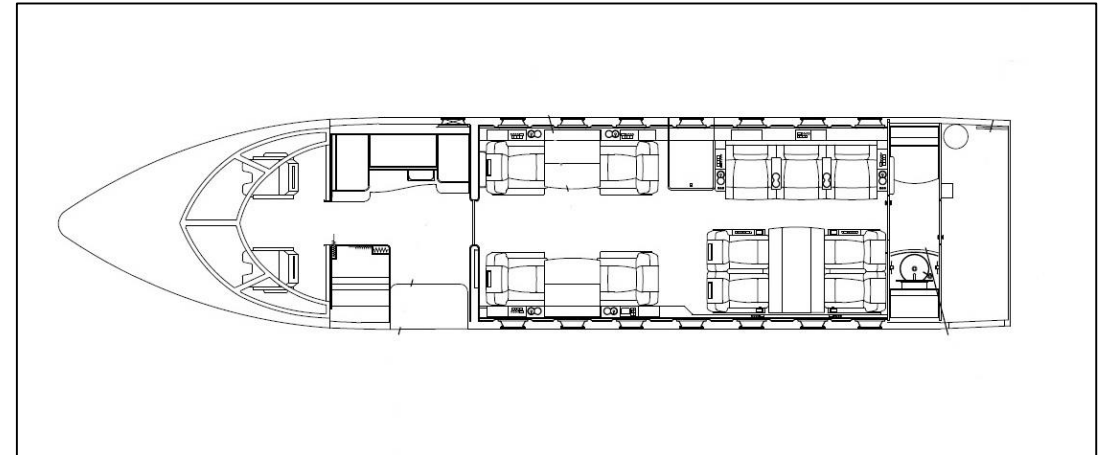
EMPIRE AVIATION GROUP

Interior

- 12 Passenger Configuration
- Forward Four Place Conference Group
- Aft Four Place Dinning Group Opposite a 4 Place Berthing Divan
- Forward Galley Featuring Microwave Oven, High-Temp Oven, Coffee/Esspresso Maker, AC Cooled Refrigerator, and Ice Bin with Water Disposal
- Jump Seat

Entertainment

- Rockwell Collins Cabin Management System V10 High-Definition Upgrade
- High Definition 10.6" Galley Touch Screen Display
- Forward and Aft Bulkhead High Definition 22" Display Unit
- Dual Blu-Ray DVD Player
- Dual HDMI Ports
- 7 USB Charging Ports
- Dual Channel Swift Broadband WiFi (Global VT for one channel and the other for internet)
- Two Satcom Telephone Handsets (one in cockpit and one near VIP Seat)





EMPIRE AVIATION GROUP

Exterior

- Overall White with Blue and Gold Stripes





2012 CHALLENGER 605 | SERIAL NUMBER 5879 | REGISTRATION M-ARKZ



2012 CHALLENGER 605 | SERIAL NUMBER 5879 | REGISTRATION M-ARKZ



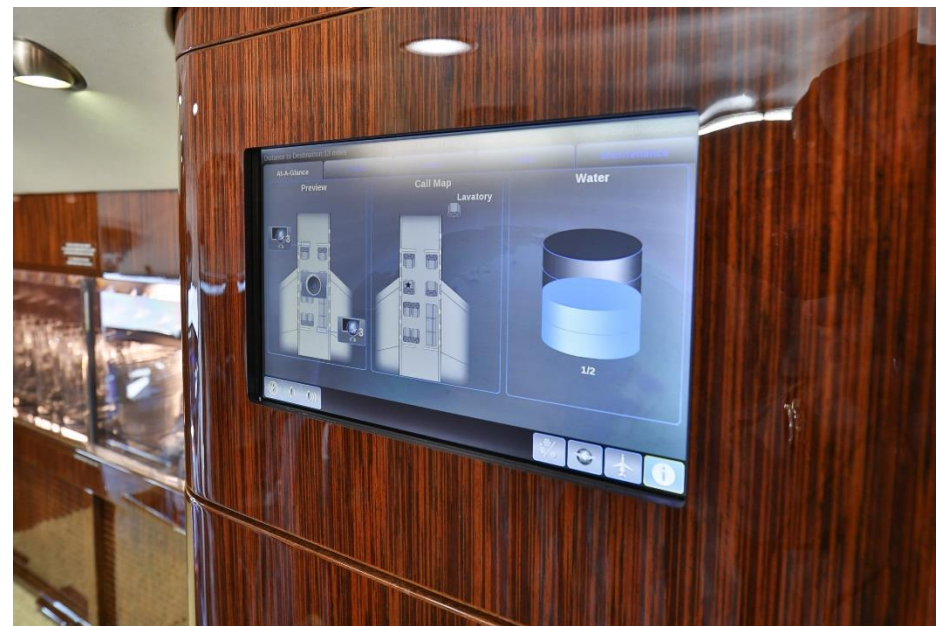
2012 CHALLENGER 605 | SERIAL NUMBER 5879 | REGISTRATION M-ARKZ

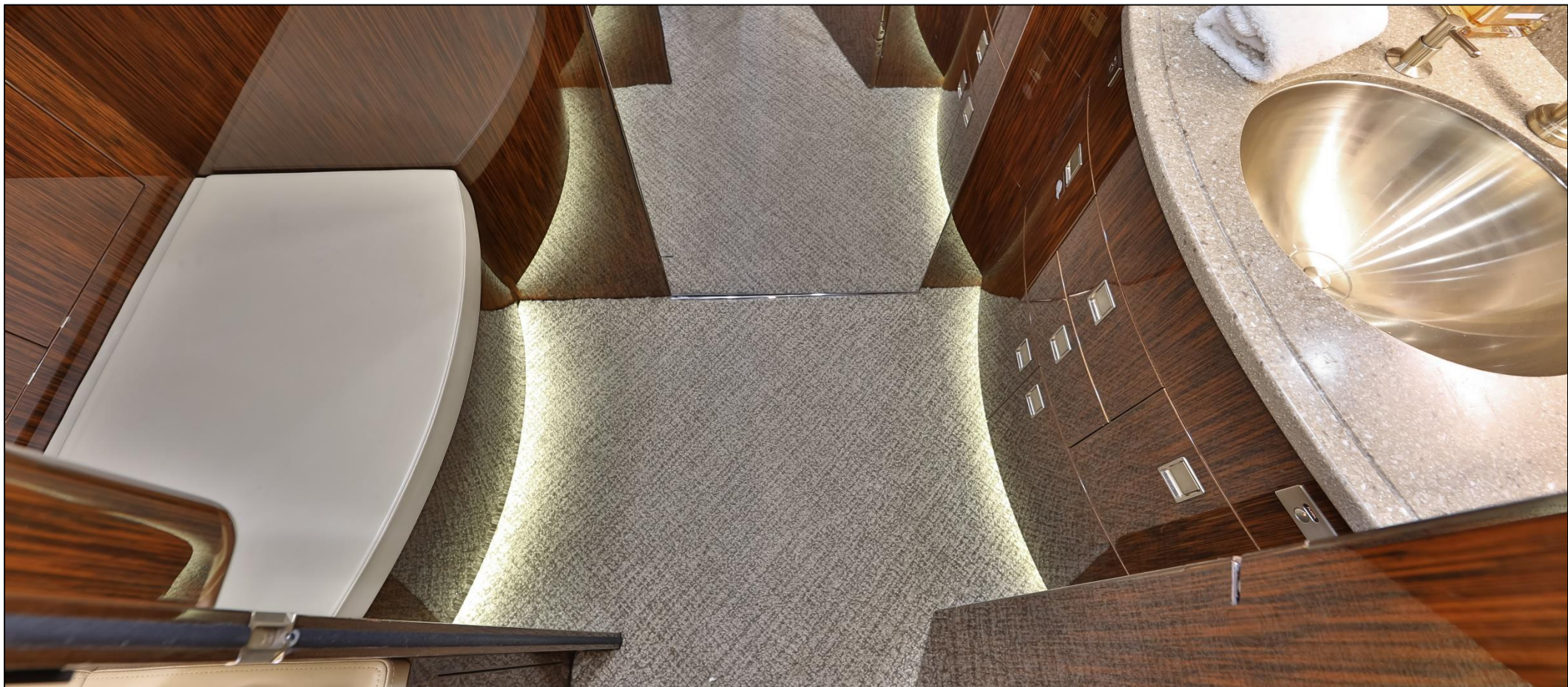
















EMPIRE AVIATION GROUP

Empire Aviation Group

WWW.EMPIREAVIATION.COM | AIRCRAFTSALES@EMPIRE.AERO | +971(4)2998444 | +1(480)6590808

DUBAI AIRPORT FREEZONE | UNIT F06 | DUBAI, UNITED ARAB EMIRATES

14605 N. AIRPORT DRIVE | SUITE 100 | SCOTTSDALE, ARIZONA 85260